



**For your buildings and properties!**  
**Any time. Simple. Fast. Up-to-date.**

**plaNavi – SHORT & SWEET**

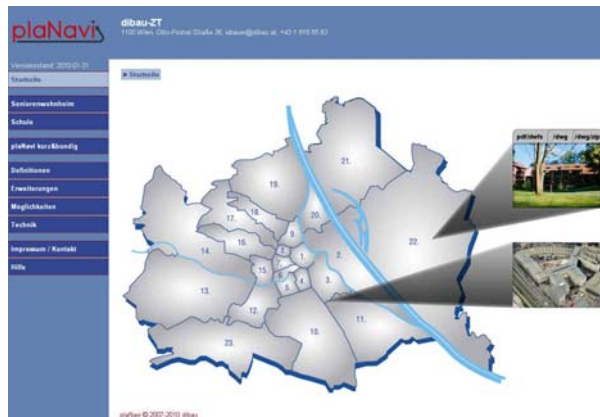
plaNavi puts an end to constant searching for urgently needed documents!

This unequalled system allows you to access documents, data and plans relating to your buildings and properties independent of time and location.

To achieve this all the documents of a business intended for use with plaNavi are digitalised – by us or by you – and given the relevant access authorisations.

From this point on all plans and document can be retrieved, viewed, printed and distributed by the authorised persons at any place in the world.

Access is by means of your standard browser – secured in your firm's own Intranet – including a graphical user interface that can be operated intuitively by every computer user. For Office-compatible PCs or notebooks no additional upgrades are necessary! External access is envisaged only by means of secure connections such as VPN, RDP, CITRIX etc.



**Who is plaNavi intended for?**

Are you a building owner, property manager, responsible for FM, an architect or a specialist designer?

plaNavi is the perfect solution for all businesses and organisations that deal with the administration and running of properties and buildings. The system is suitable for projects of every size, and in theory there is no limit to the number of plans and document data that can be integrated.

**In what ways do you profit from plaNavi?**

With plaNavi you save, above all else, time – and therefore money!

All relevant information can be founded speedily and unerringly – even extra-large amounts. The up-to-date and complete data and plans required in day-to-day business are available to all authorised users at any time and in any location.

And new ideas or requirements can also be integrated at any time for only minimal expenditure of time and money.

**Impressive! But what about the financial background?**

plaNavi is conceived as open-source software and that means: no further licence fees, no running costs through service agreements etc.

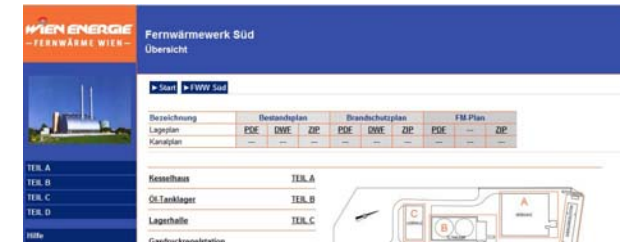
plaNavi is based on XML, is XSLT-programmed and is administered by means of xForms and eXist databases. Further development and support of this environment is guaranteed by W3C standards. The solution can be installed without any difficulty in the subdirectory of a network drive which must then just be enabled for all plaNavi users. Ready!

Individual access authorisations are directly administered through plaNavi.

**How are the plaNavi contents maintained?**

A specially trained staff member of your business or a plaNavi service provider deals, as required, with augmenting, deleting or expanding buildings, properties and access authorisations.

**Simple graphical navigation from the site plan...**



**... to the right building ...**



**... and to the documents you are looking for!**

| Objekt-ID    | SAP-Nr | Netto-Nr | Netto-Fläche | Nutzungs-Stufe | Bestandstyp | Nutzer B |
|--------------|--------|----------|--------------|----------------|-------------|----------|
| 405202077780 | 3-332  | 3339     | 10,22m²      | WV             | EISEN       | WITAF    |
| 405202077779 | 3-311  | 3335     | 10,25m²      | WV             | TERRAZZO    | WITAF    |
| 405202077778 | 3-309  | 3310     | 11,01m²      | VORBAUM        | TERRAZZO    | WITAF    |
| 405202077778 | 3-310  | 3312     | 11,92m²      | GANG           | REKONSTR    | WITAF    |
| 405202077776 | 3-308  | 3311     | 56,33m²      | SAAI           | PANKEIT     | WITAF    |
| 405202077775 | 3-307  | 3309     | 72,40m²      | SAAI           | PANKEIT     | WITAF    |
| 405202077774 | 3-306  | 3308     | 69,16m²      | SAAI           | PANKEIT     | WITAF    |
| 405202077773 | 3-305  | 3307     | 54,11m²      | KUCHE          | EISEN       | WITAF    |
| 405202077772 | 3-304  | 3306     | 47,11m²      | BURGO          | AMANI       | WITAF    |
| 405202077771 | 3-303  | 3305     | 47,11m²      | BURGO          | AMANI       | WITAF    |
| 405202077770 | 3-302  | 3304     | 27,25m²      | LARGE BALKON   | KUNSTSTOFF  | WITAF    |

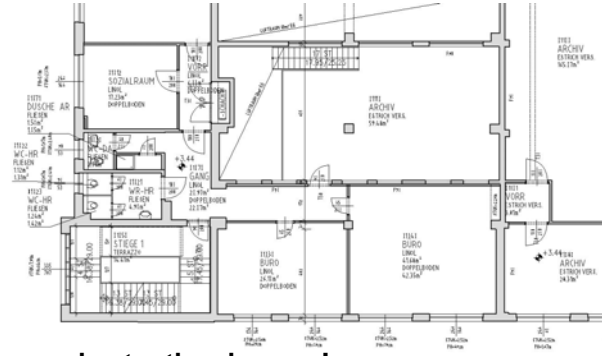
**Any time.  
Simple.  
Fast.  
Up-to-date.**  
**plaNavi**

## And how does that work with plans?

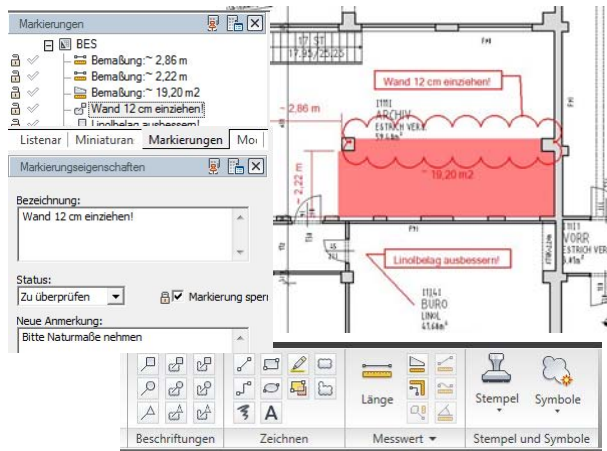
The standard data formats used, pdf and dwfx, allow the complete use of all CAD data via browser-integrated viewers.

Without any advance knowledge of CAD you can switch contents on and off, document changes, measure distances and areas and print these plans on any chosen printer. The data revised in this way can be taken over and integrated 1:1 by the CAD department.

## Open a DWFx file in the browser ...



## ... and enter the changes!



## Have we aroused your interest? Do you want to use **plaNavi** in your business?

All you need to do is make a phone!

**plaNavi** projects can be rapidly and efficiently planned, implemented and started up within a short space of time.

Present us with a challenge – we look forward to hearing from you!

## Some of the uses and advantages of **plaNavi**

### ... for department heads:

You need to quickly prepare documentation for the management to use at a press conference tomorrow? It is 7 pm and everyone in the CAD department and archive has left the building?

With **plaNavi** you can accomplish this quickly, with no outside help, if necessary even from at home!

### ... for project managers:

You have to send a specialist planner all the up-to-date documentation on a property or building by email? You can find documents but don't know whether they are up-to-date and, most importantly, complete?

With **plaNavi** you always have the most up-to-date documentation in the system!

### ... for building managers:

You have an out-of-house appointment and have all the necessary files, plans and other documents with you? But is this paper documentation complete or are there always some plans, contracts, official notices etc. missing?

No problem! With **plaNavi** all necessary documentation is rapidly available to you via Internet at any time! And when necessary you can distribute these straight away by means of a USB flash drive!

### ... for CEOs and managers:

You have an idea and need certain documents? You request these documents internally. Do you get them "just in time"? And if so, is the cat not already out of the bag, and are you unexpectedly confronted with a strong headwind?

To put it differently: do you often have the feeling that people are looking over your shoulder too much?

Free yourself from unwanted supervision! Don't allow your ideas to be sabotaged internally! Use **plaNavi** when, how and wherever you want to!

### ... for technical building maintenance:

The plans of your building differ considerably from its current state? You are in good company, incidentally! You document and sketch alterations etc.? You file these away? Send them on to HQ? And then...?

Use the red-lining feature of the DWFx format! Document changes digitally and understandably and request rapid updating of the data in the CAD department – ready!



**OStR. Prof. Dipl.-Ing. Edmund Bauer**  
Staatlich befugter und beeideter  
Zivilingenieur für Bauwesen

Otto-Probst-Straße 36/II/Büro 7, 1100 Wien  
T +43 (1) 615 65 63 F +43 (1) 615 65 78  
ebauer@dibau.at



Graphical navigation through plan and document  
information of buildings and properties. Anytime.  
Simple. Fast. Up-to-date.

[www.planavi.at](http://www.planavi.at)

## Our further areas of competence:

### dibau-ZT

Production and checking of as-built plans and fire control plans according to the CAD guidelines of, for example, the City of Vienna 1998, the BMfLV 2004, the BIG 2005/2007 and others.

[www.dibau.at](http://www.dibau.at)

### dibau-FM

CAD as-built plans with building condition surveys, site and building surveys, digitalisation and compilation of databases

[www.bestandsvermessung.at](http://www.bestandsvermessung.at)

### bbs CAD Academy GmbH

The Autodesk authorized training centre for the areas of architecture and civil engineering

AutoCAD  
AutoCAD Architecture  
Revit Architecture  
3d MAX

[www.bbscad.at](http://www.bbscad.at)